

Bassingham and Villages circular

A 6.5 mile circular route taking in the villages of Bassingham, Carlton Le Moorland, Stapleford and Norton Disney in Lincolnshire.



Moderate Terrain

6.5
Miles
Circular
3 hours

080323



IMPORTANT NOTE: This is a circular route and does involve walking through fields with cattle, styles and sections of road walking along quiet country roads.

This walk takes you through four delightful villages, each with churches, plentiful history and community artwork to enjoy, plus beautiful open expanses of arable farmland in between.

FACILITIES: Refreshments are available at the various pubs in the villages including The Bugle Horn and Five Bells in Bassingham. Booking is advisable if you are wanting food. The Green Man in Norton Disney also serves food and drink. We recommend checking opening times prior to your walk to avoid disappointment.

Getting there

The walk starts at Hammond Hall car park which is on Lincoln Road. This is a good sized car park but please bear in mind that this can get busy as it is used by the hall, school and for the playing fields. There is also on street parking and we advise you to park legally and respectfully.

Approximate post code of Hammond Hall is **LN5 9HQ**.

Access Notes



1. The walk is almost entirely flat and follows a mixture of pavements, tarmac paths, quiet lanes, grass tracks and field paths.
2. The route crosses several crop fields so these paths can be narrow in part and can also be muddy depending on the time of year.
3. There are a couple of sections of road walking that need care.
4. You will need to negotiate some gates with electric fencing hooks that you undo and re connect, styles and kissing gates.
5. There are fields with cattle grazing, dogs to be kept on leads at all times and follow farmers instruction signage when accessing through their land.
5. OS Map Explorer 272 Lincoln.
6. Please remember the Countryside Code.



Get the AllTrails App for a smarter walking experience. 75K walking guides in the palm of your hand with live maps that show your progress as you walk. Say goodbye to wrong turns.

[alltrails.com](https://www.alltrails.com)



Walk Sections

Go → 1 Start to Carlton Le Moorland



As you come to the end of the foot path you will come to a metal silhouette cyclist, worker and cow art piece. Continue along the path until you come to the staggered crossroad junction.

At this point you will carefully cross the road and head across the road entering Vicarage Lane. You are now in Carlton Le Moorland.

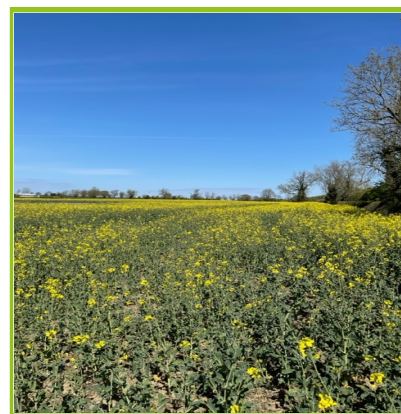
Starting in the main entrance into Hammond Hall car park, turn left and walk along the footpath. This will take you past Bassingham Primary School on your left and the Bugle Horn pub on your right. Continue along the pathway crossing over a small side road (Torgate Lane) you will see the start of the Sustrans cycle and path way which runs along side Carlton Road, separated by a thick hedge. As you walk along this stretch of pathway you will pass several art pieces including a Hare, Shire horse and carriage and numerous decorative benches.

2 → 3 High Street to Clay Lane

Follow the High Street which will bend round to your right where the road becomes Clay Lane which is a quiet road. As you walk along leaving the village the footpath ends but leaves very wide grass verges to walk along. As you walk along Clay Lane you will be surrounded by fields and the open countryside.

1 → 2 Vicarage Lane to High Street

Continue along Vicarage Lane and follow the road around to the right where the road becomes Church Street, you will then have St. Mary's church on your left hand side. Continue along the road until you come to a T – Junction, turn left onto the High Street.



3 → 4 Clay Lane to field Footpaths

Continue along Clay lane and enjoy the views of the open countryside as you walk along the road for a good ten minutes. The road will then bend sharply to the left and after another few minutes walking you will come to a public footpath sign to your right where you walk over a wooden bridge and enter a field.



4 → 5 Field footpaths to Stapleford Church

Once you have crossed over the wooden bridge keep to the right hand side of the field with the hedge on your right continue to the end of the field where you will then turn left and walk along the top of the field until you see a public footpath sign to your right where you will cross into the field (this field has crops growing so depending on the time of the year depends on how high the crops are) and then walk on to the opposite side of the hedge for a few metres before then following the labelled footpath diagonally across the field. At the end of the path you will cross a wooden bridge with a metal gate on the opposite side. Carefully open the gate which requires you to unhook the electric fence so you can enter the field which usually has sheep in but this could change throughout the year. Please close the gate and reattach the hook for the fence.

Walk diagonally to your right across the field where you will go through another metal gate. Turn right and follow the track which will take you over an open sided concrete bridge. Once across you will see the All Saint's church ahead.



6 → 7 Stapleford to Norton Disney

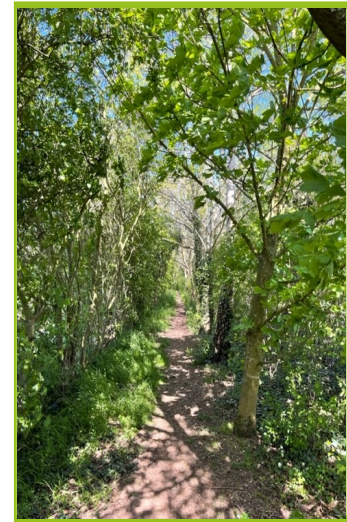
Continue following this grass footpath as it bends round to the left and continues straight for a good while and then bends left again. Once you come to the end of the pathway you will take a right turn over a wooden bridge and go through a metal gate on the opposite side. The field you are entering often has sheep in. continue through the field and at the end you will go through a kissing gate and then enter a wooded footpath. Continue along this and then when you come out you will have the wooded area to your right and open field. Continue along this pathway until you come to a kissing gate. As you enter you will see some glamping pods on your left and the Green Man pub, Norton Disney straight ahead. This is an ideal place to stop for a bite to eat or drink. Check opening times prior to your walk.

5 → 6 Stapleford Church through village

Walk towards the church and enter the churchyard through the gate and public footpath sign post. Once you have walked through the church yard take the footpath down to your right and you will be entering the village of Stapleford.

As you enter the village turn right to the T-junction and then turn right on to Norton Road, cross the road carefully so you are walking on the left handside with the road to your right and continue along the road which will then bend round to the left. Keep on the left hand side of the road as there is a public footpath but as you leave the village the footpath disappears and at this point carefully cross to the opposite side of the road so you are on the right with the road to your left and continue along the road out of the village.

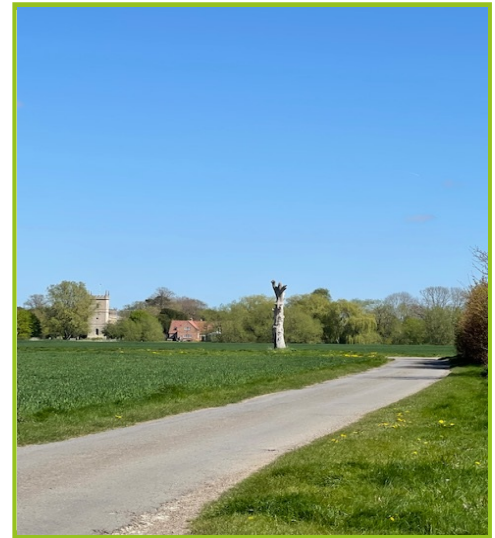
Once you have left the village you will see the road bends round to the right at this point you will see straight ahead of you a public footpath sign straight ahead, carefully cross the road and turn right to follow the public footpath which will take you to the right along the hedgerow which separates you from the road.



7 → 8 Norton Disney to Bassingham

When you leave the pub you are on the Main Street in Norton Disney, turn right and follow the road out of the village.

You will then come to a junction where you will take the left turning down Clay Lane (single track lane). You will continue along this road for a good while. The road will bend round to the left, and right several times and you will have open fields either side. The further along the road you go you will start to see Bassingham church tower in the distance. As you take the last left bend you will pass a large, dead tree at the edge of the road and ahead you will see some large conifers which edge a water works plant. As you come to the water works you will turn right and follow the public footpath. The water works will be on your left. Continue you along the footpath and go across the concrete bridge which will lead you back in the village of Bassingham. After crossing the bridge continue along the footpath which will bring you out on to Newark Road where you will see a brick monument opposite, cross over the road and turn left and take the next right turn onto Lincoln road. You will have a nursing home on your right. At the end of the road you will come to a T-junction, turn left and follow the road back to Hammond Hall car park. You will have the school on your right and the Bugle Horn pub on your left.



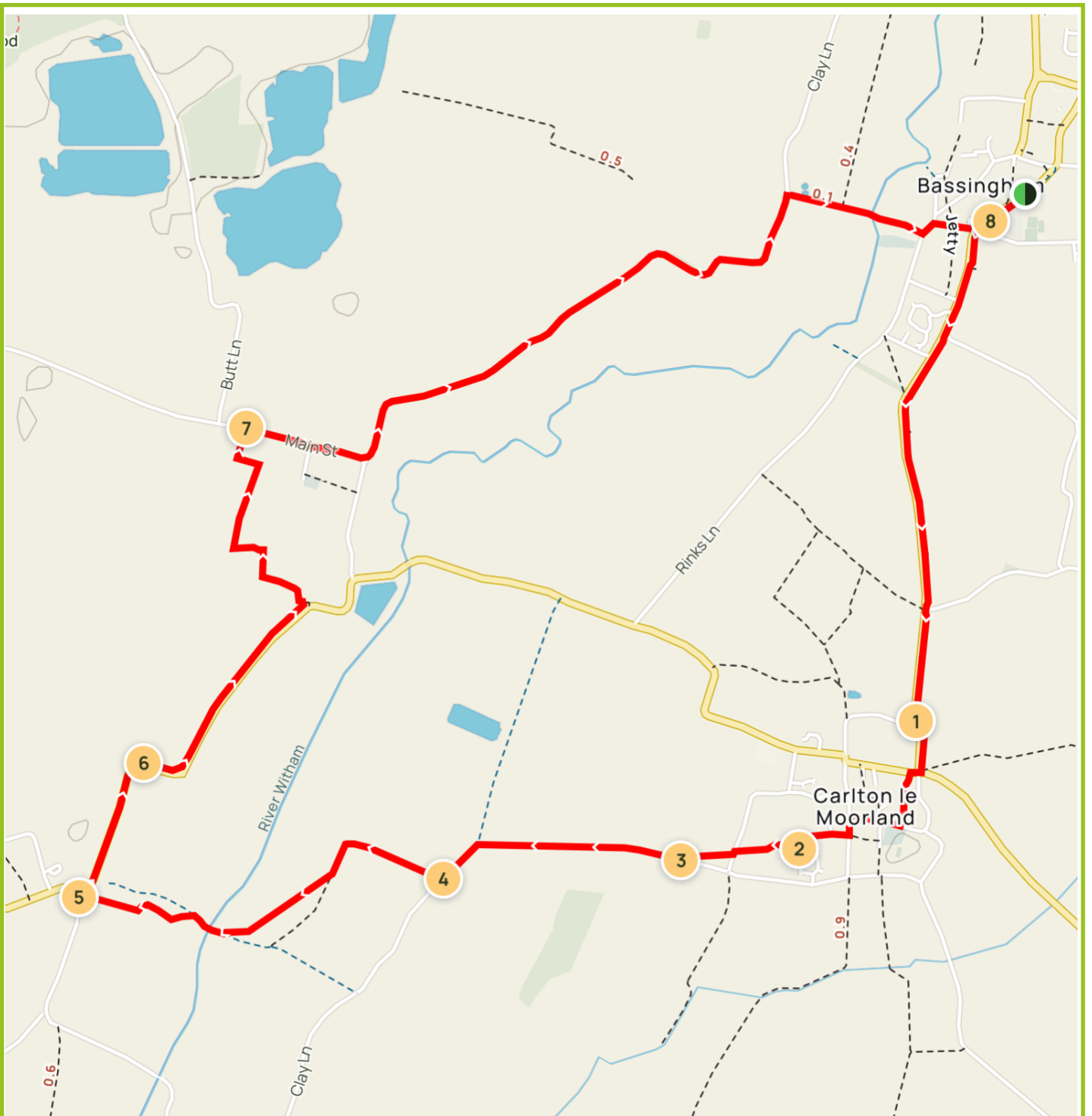
Disclaimer

This walking route was walked and checked at the time of writing. We have taken care to make sure all our walks are safe for walkers of a reasonable level of experience and fitness. However, like all outdoor activities, walking carries a degree of risk and we accept no responsibility for any loss or damage to personal effects, personal accident, injury or public liability whilst following this walk. We cannot be held responsible for any inaccuracies that result from changes to the routes that occur over time. Please let us know of any changes to the routes so that we can correct the information.

Walking Safety

For your safety and comfort we recommend that you take the following with you on your walk: bottled water, snacks, a waterproof jacket, waterproof/sturdy boots, a woolly hat and fleece (in winter and cold weather), a fully-charged mobile phone, a whistle, a compass and a map of the area. Check the weather forecast before you leave, carry appropriate clothing and do not set out in fog or mist as these conditions can seriously affect your ability to navigate the route. Some routes include sections along roads – take care to avoid any traffic at these points. Around farmland take care with children and dogs, particularly around machinery and livestock.





0.2°W
17/03/2023

0.2 0 0 0 0 0.2 MI 0.4

200 0 0 200 400 600 800 M 1000

Scale 1: 16592 Datum WGS84

Gain: 446.19 ft Loss: 456.04 ft

